

Netherby 1DW1 LWD RT 500MD

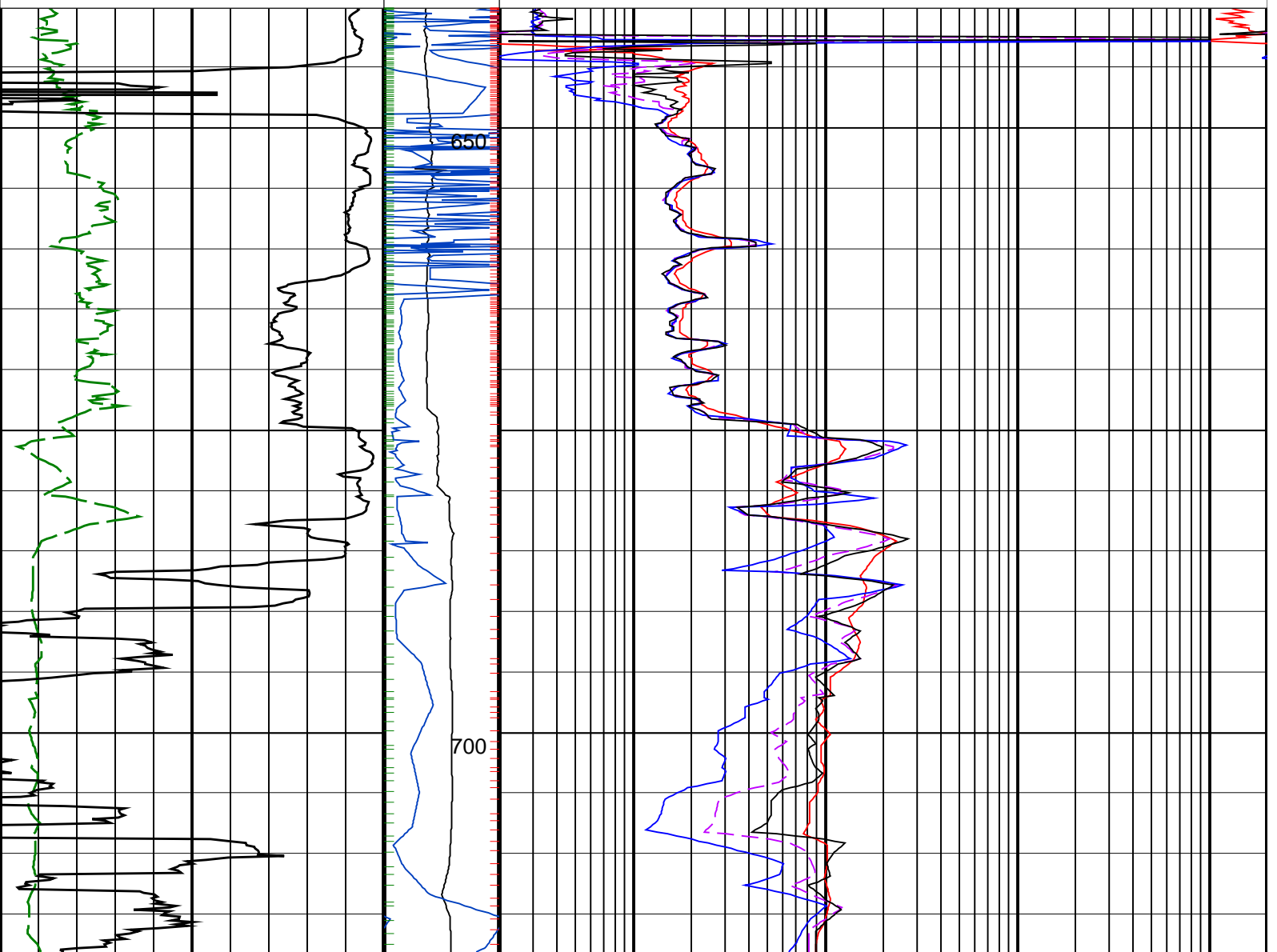
IDEAL Version: ID13_0C_08 <MD > Vertical Scale: 1:500

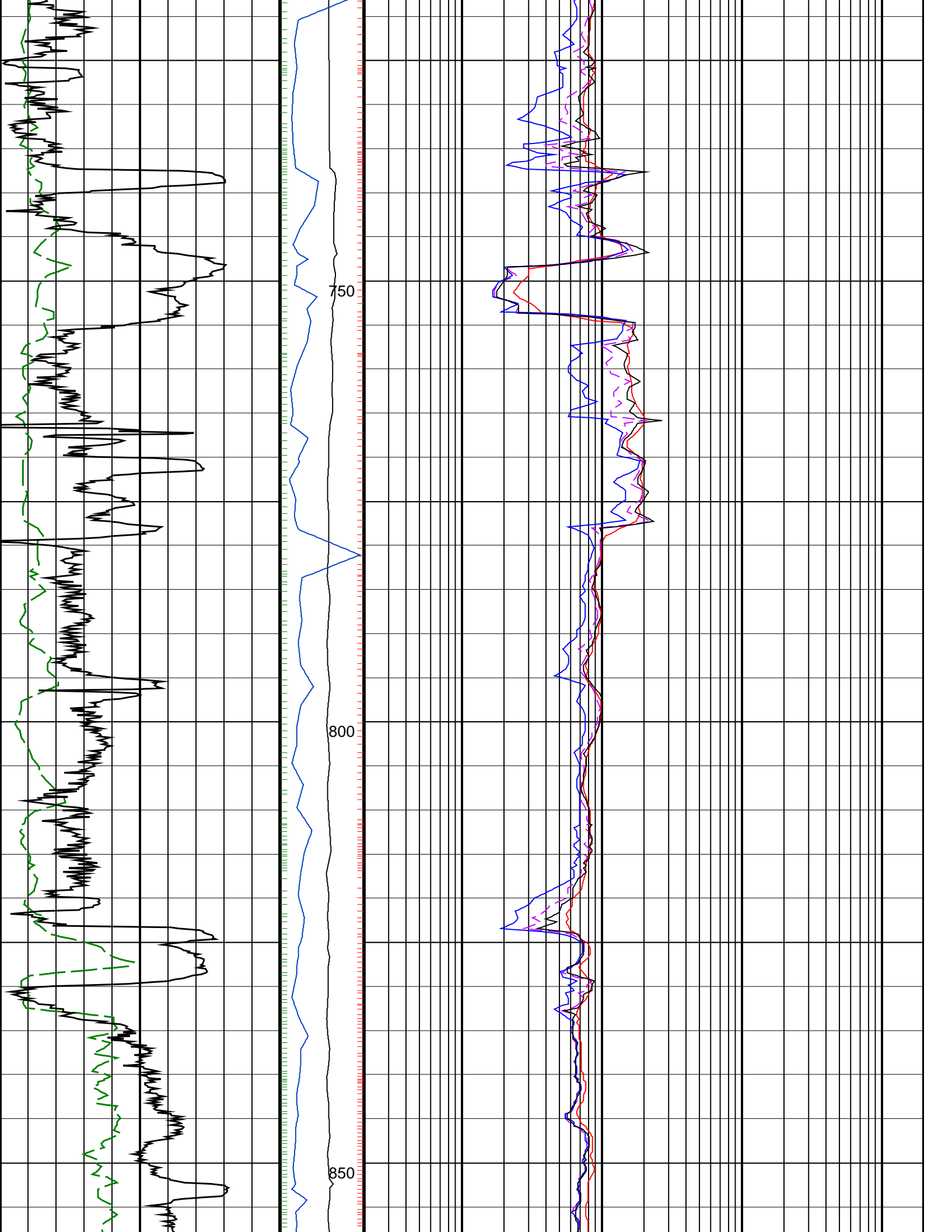
Graphics File Created: 04-Aug-2008 03:08

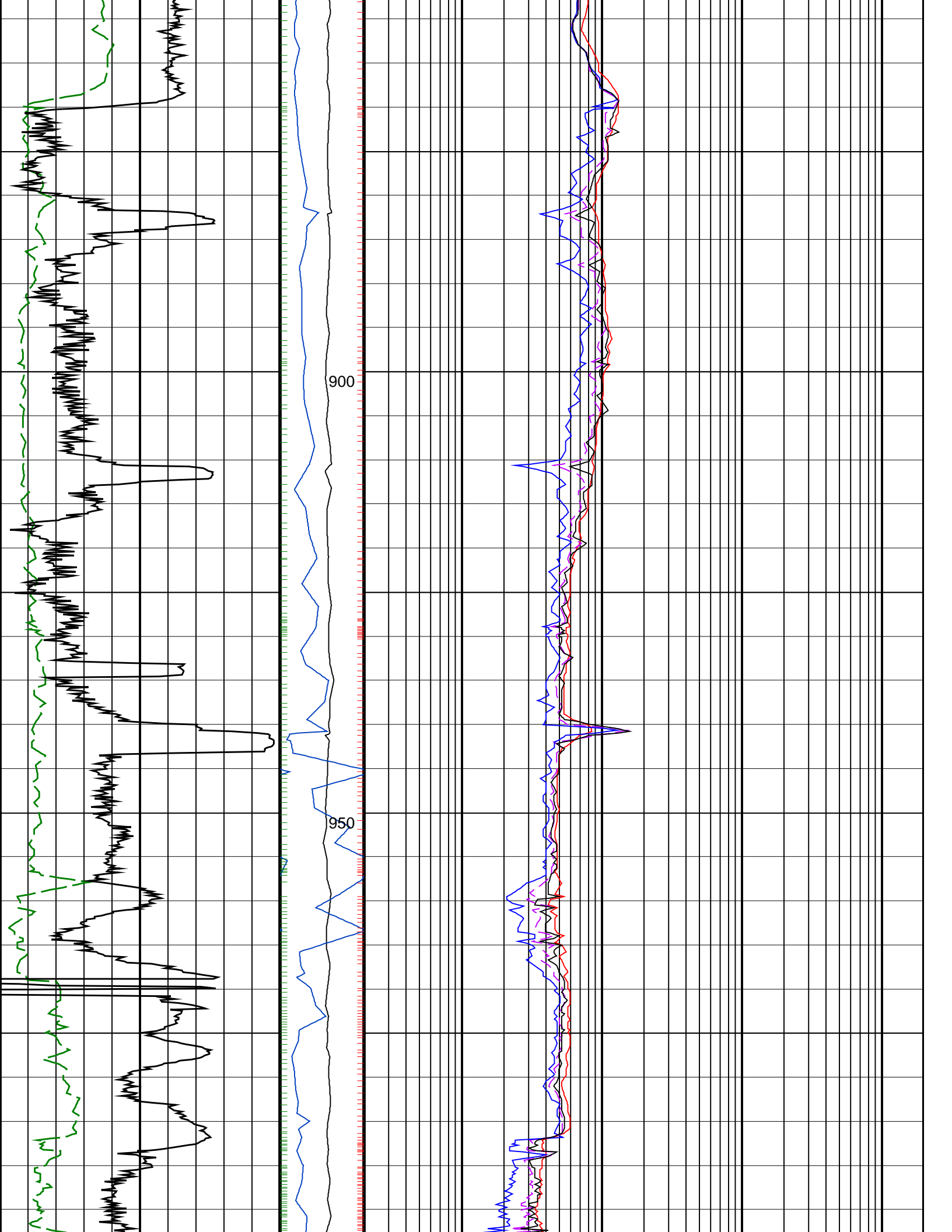
PIP SUMMARY

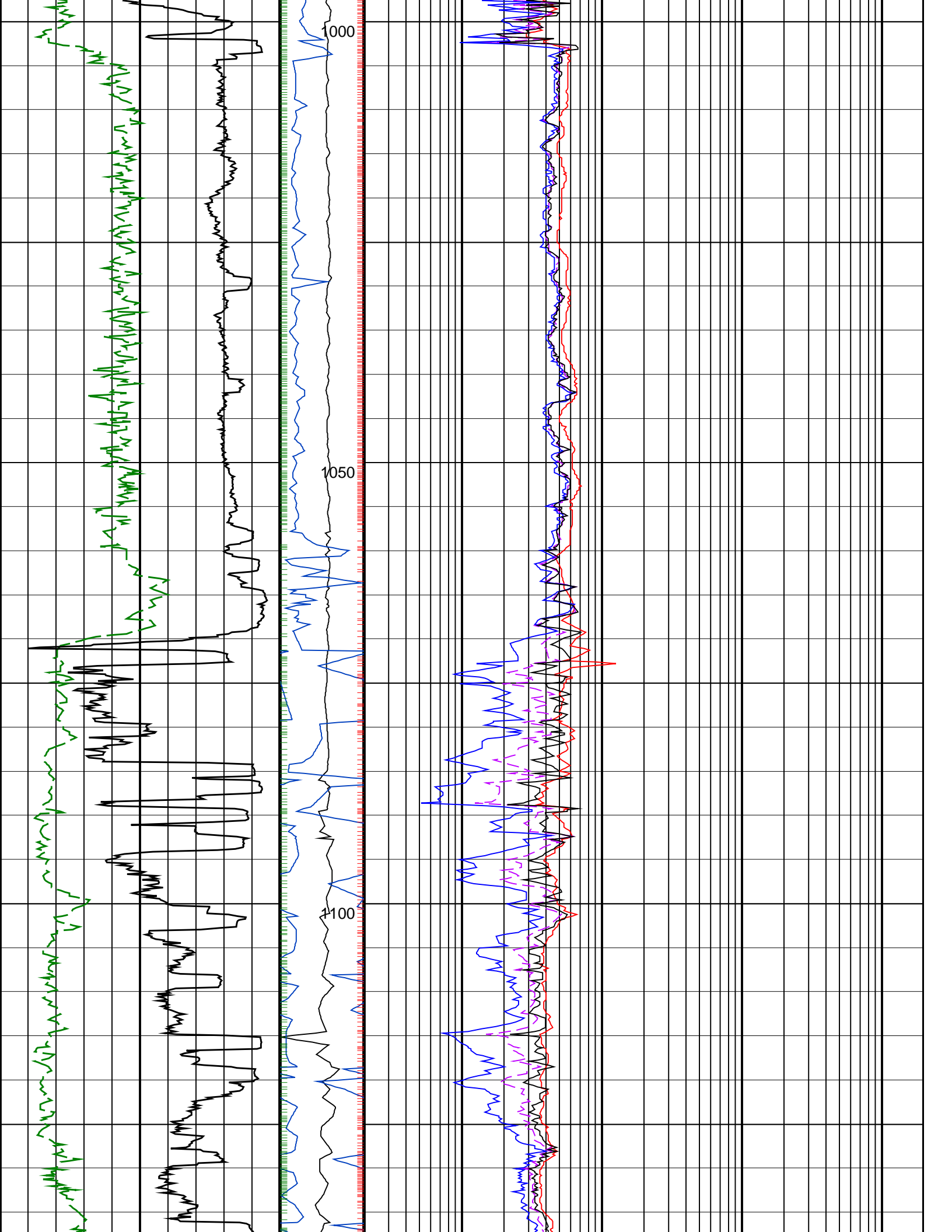
- ┆ ARC Gamma Ray Samples
- ┆ ARC Resistivity Samples

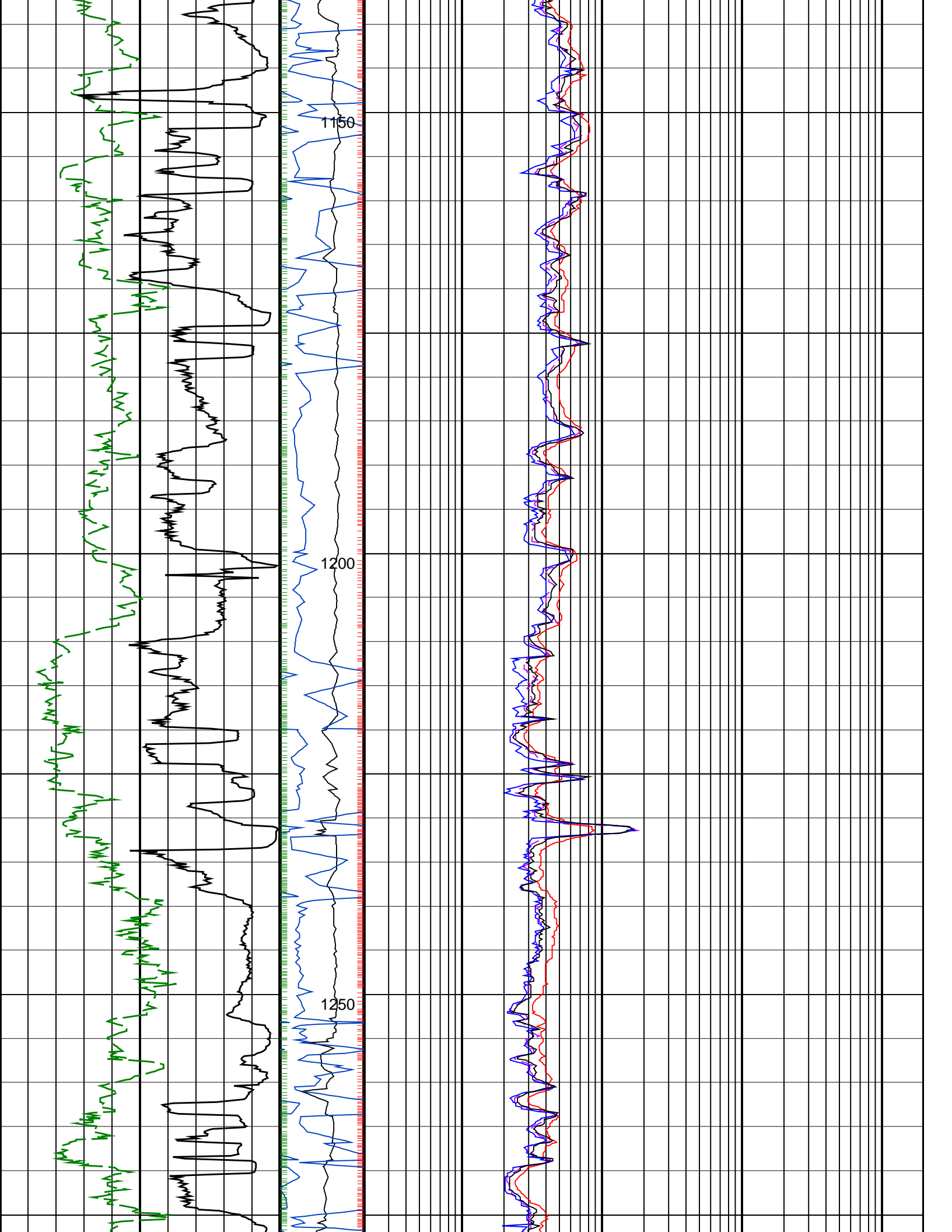
		ARC BHCorr Phase-Shift Resistivity 40-in. at 2 MHz, Real-Time (P40H_RT)
		0.2 (OHMM) 2000
		ARC BHCorr Phase-Shift Resistivity 16-in. at 2 MHz, Real-Time (P16H_RT)
		0.2 (OHMM) 2000
ARC Gamma Ray, Real-Time (ARC_GR_RT) (GAPI)	MWD Collar RPM (CRPM_RT) (RPM)	ARC BHCorr Phase-Shift Resistivity 28-in. at 2 MHz, Real-Time (P28H_RT) (OHMM)
0 200	0 200	0.2 (OHMM) 2000
ROP*5 (ROP5) (M/HR)	PKPK_RPM (Stick_RT) (RPM)	ARC BHCorr Attenuation Resistivity 40-in. at 2 MHz, Real-Time (A40H_RT) (OHMM)
200 0	0 200	0.2 (OHMM) 2000

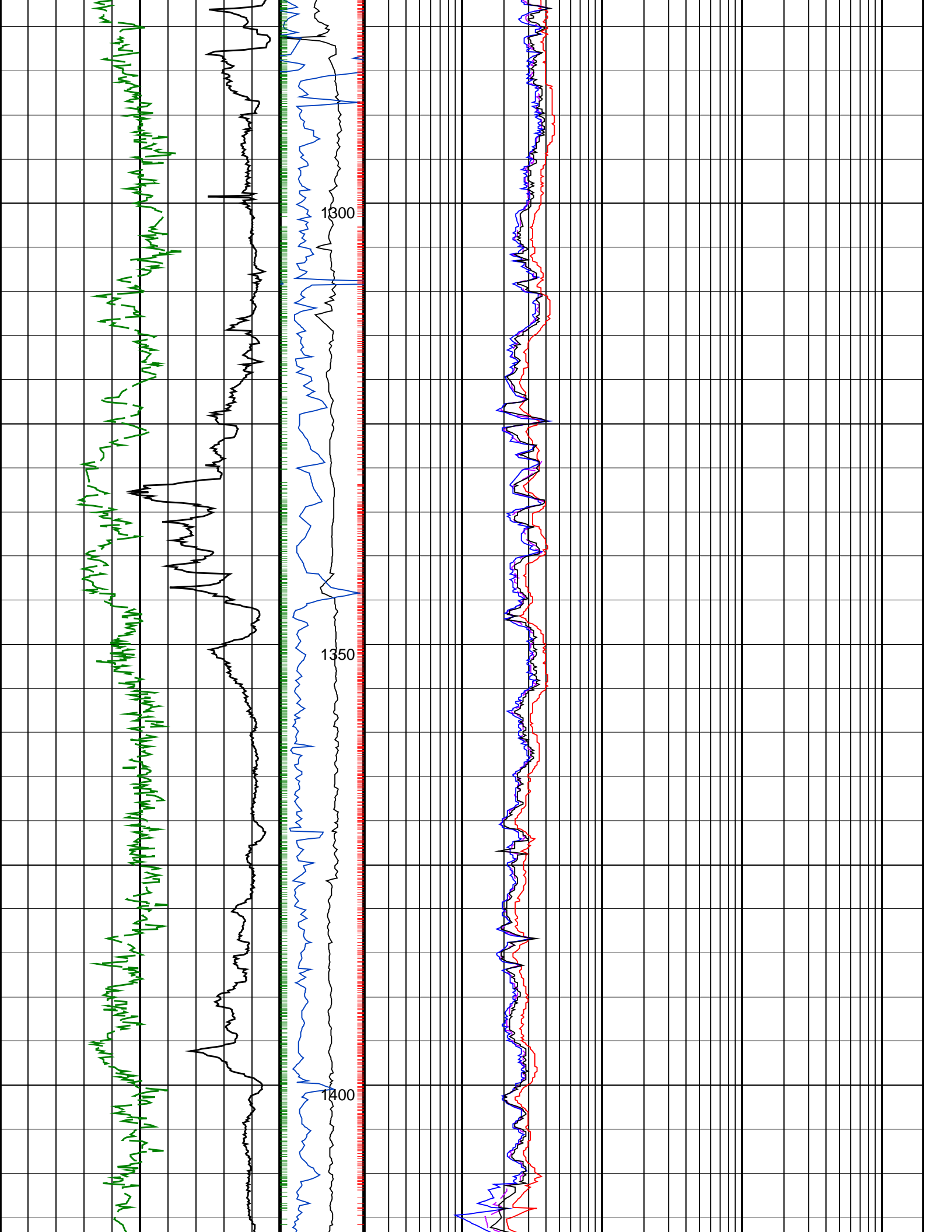


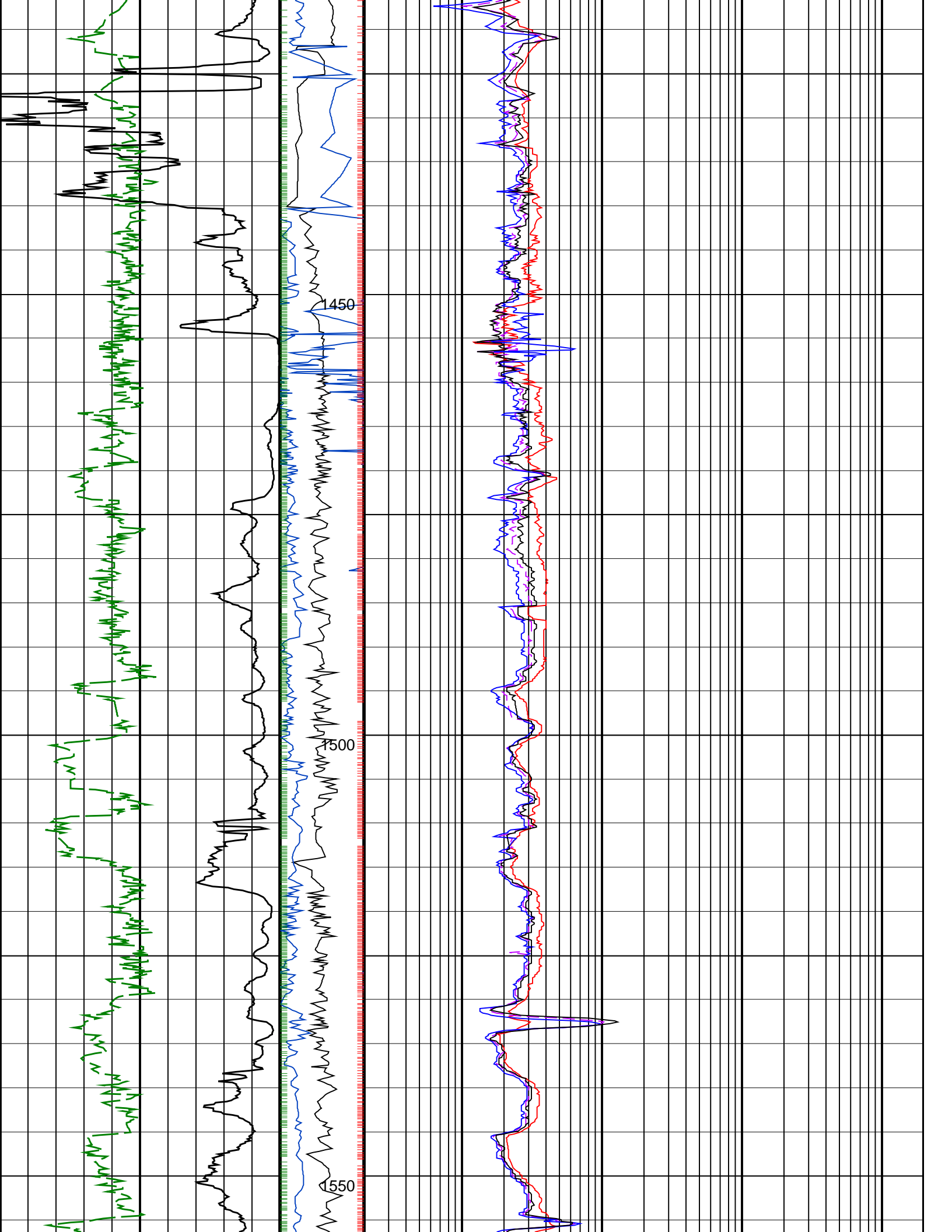


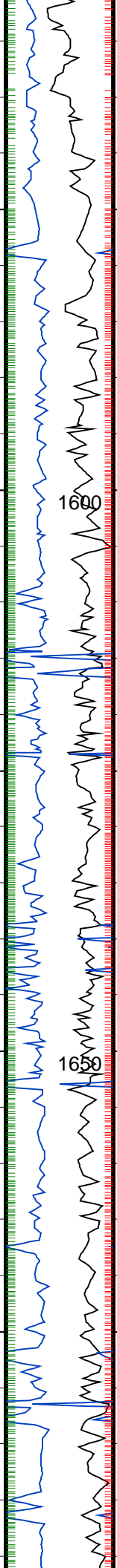
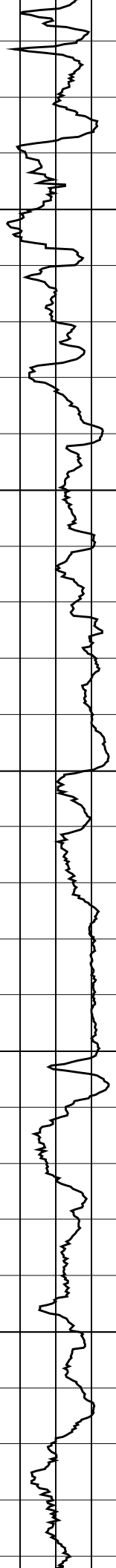
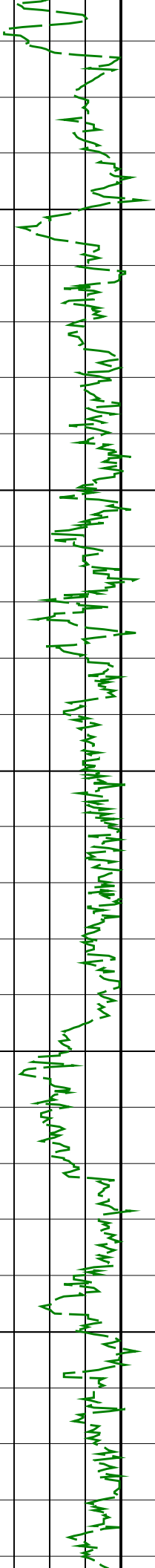






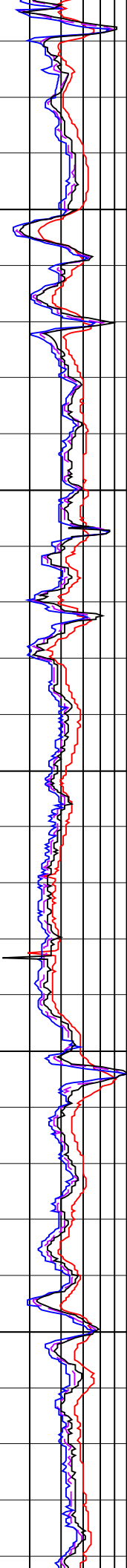


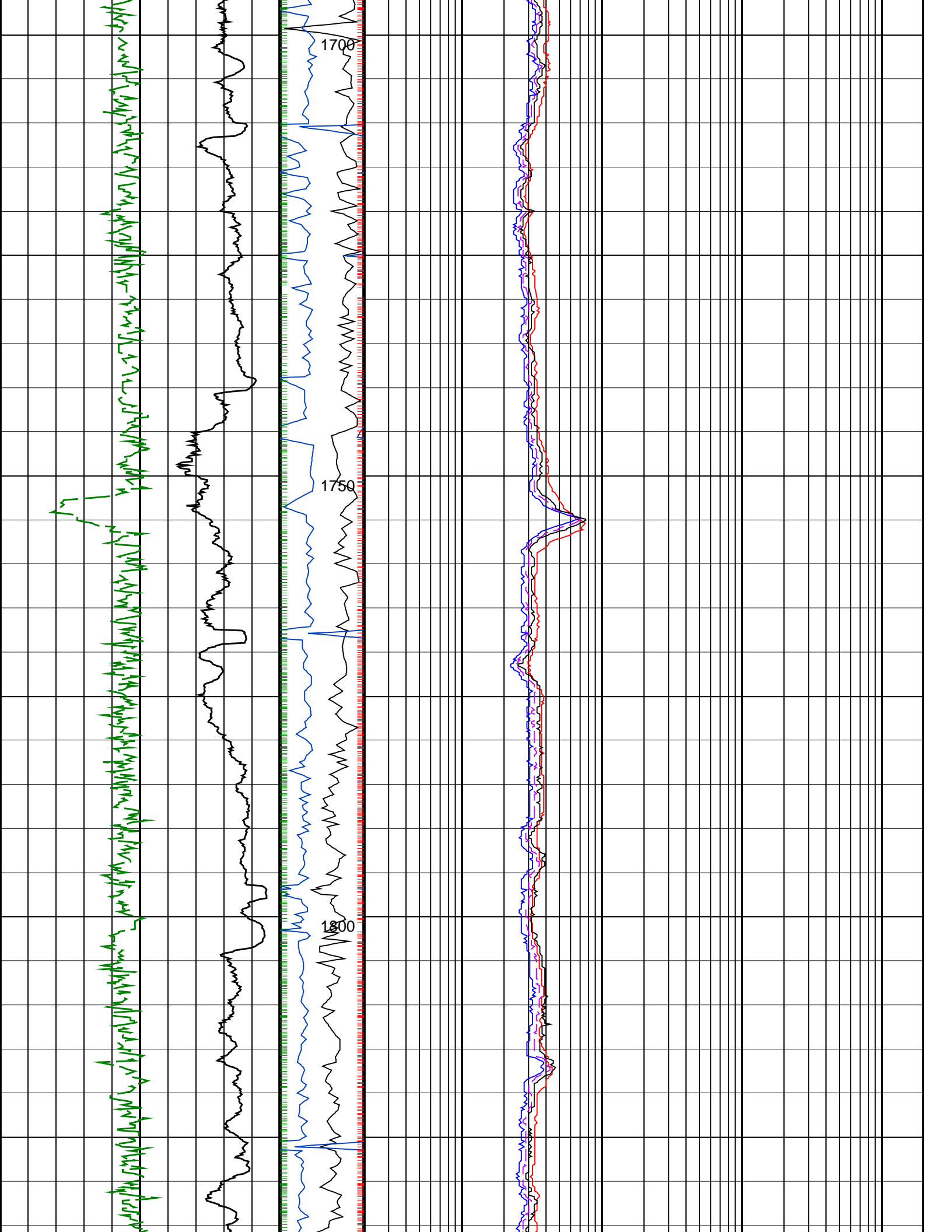


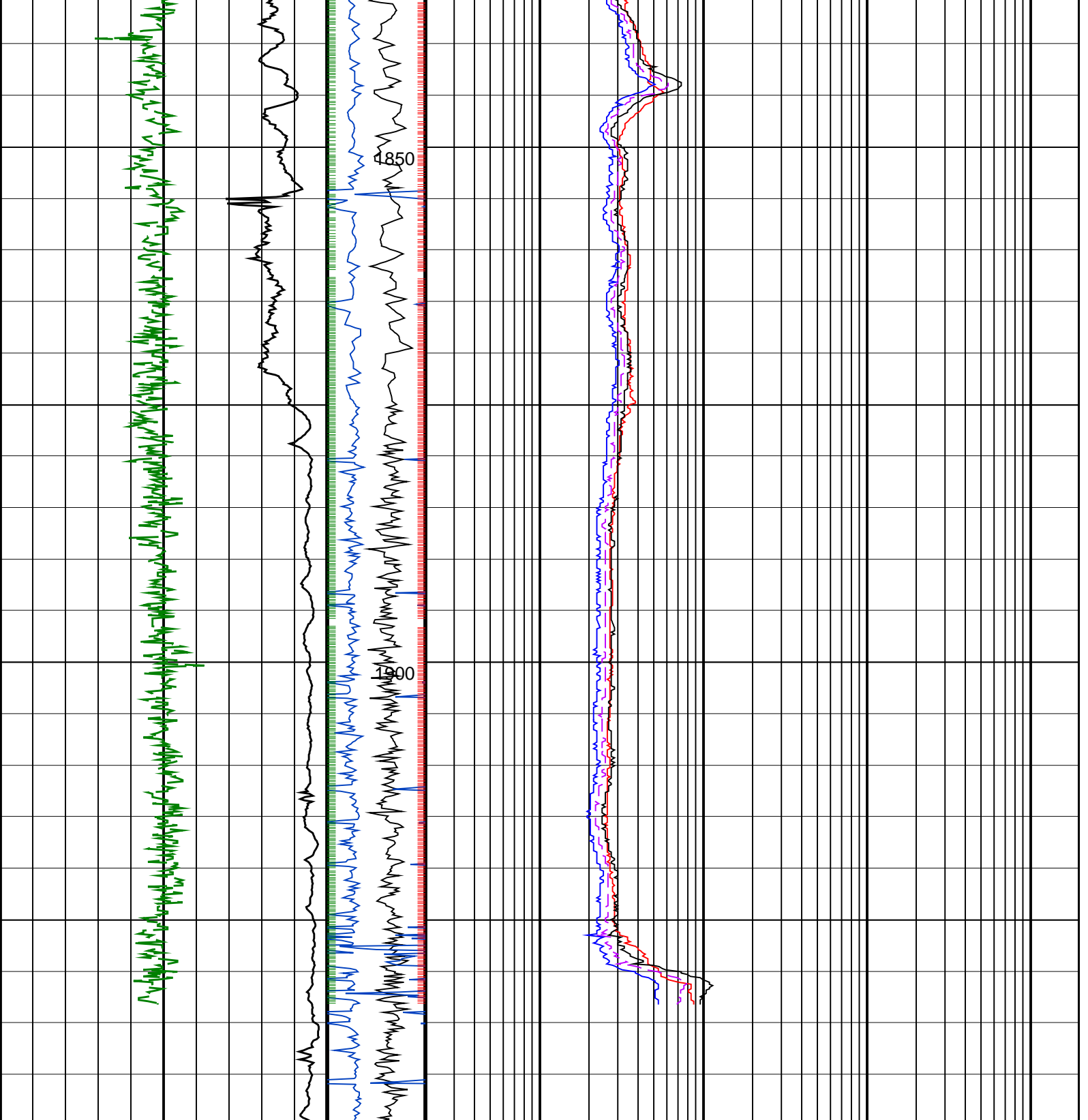


1688

1658







<p>ROP*5 (ROP5) (M/HR)</p> <p>0 200</p>	<p>PKPK_RPM (Stick_RT) (RPM)</p> <p>0 200</p>	<p>ARC BHCorr Attenuation Resistivity 40-in. at 2 MHz, Real-Time (A40H_RT) (OHMM)</p> <p>0.2 2000</p>
<p>ARC Gamma Ray, Real-Time (ARC_GR_RT) (GAPI)</p> <p>0 200</p>	<p>MWD Collar RPM (CRPM_RT) (RPM)</p> <p>0 200</p>	<p>ARC BHCorr Phase-Shift Resistivity 28-in. at 2 MHz, Real-Time (P28H_RT) (OHMM)</p> <p>0.2 2000</p>
		<p>ARC BHCorr Phase-Shift Resistivity 16-in. at 2 MHz, Real-Time (P16H_RT) (OHMM)</p> <p>0.2 2000</p>
		<p>ARC BHCorr Phase-Shift Resistivity 40-in. at 2 MHz, Real-Time (P40H_RT) (OHMM)</p> <p>0.2 2000</p>

PIP SUMMARY

- ┆ ARC Gamma Ray Samples
- ┆ ARC Resistivity Samples